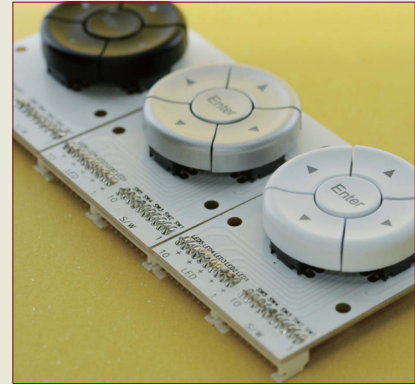
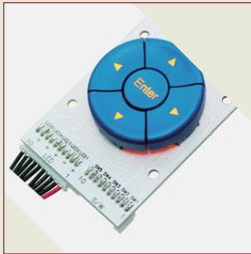


Navigate with Style!

EL5K series Navigation Switch Modules



General Specification:

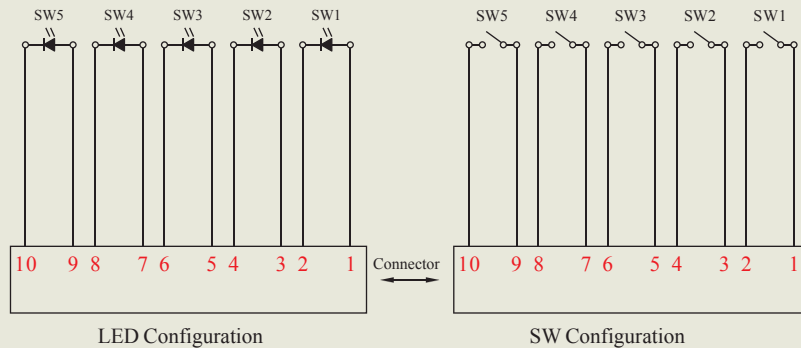


Circuit	:SPST
Current Rating	:50mA @ 12VDC
Contact Resistance	:100mOhm Max.(initial)
Insulation Resistance	:100MOhm Min.
Operating Force	:300gf±50gf
Total Travel	:0.3mm±0.1mm
Operating Life	:1,000,000 cycles Min.
Operating Temperature	:-10°C~+60°C.
Solder Specifications	:260°C for 3 seconds

Materials:

Cover	:Polycarbonate (PC)
Reflector	:Polyamide(PA)
Base	:LCP
Action Dome	:Stainless steel with silver plating
Terminal	:Phosphor bronze (PBS) with gold plating

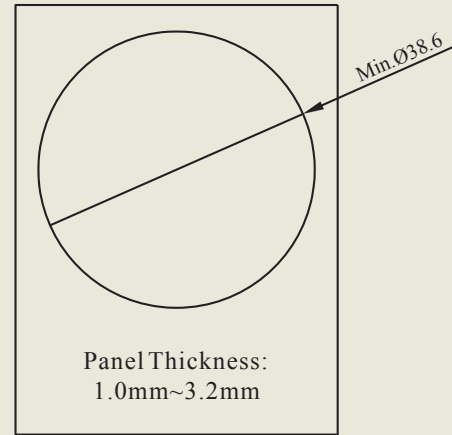
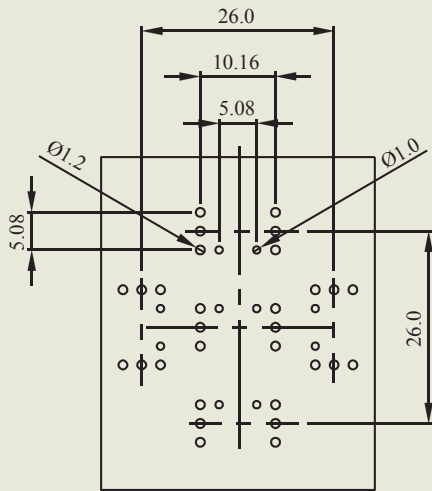
Contact Configuration:



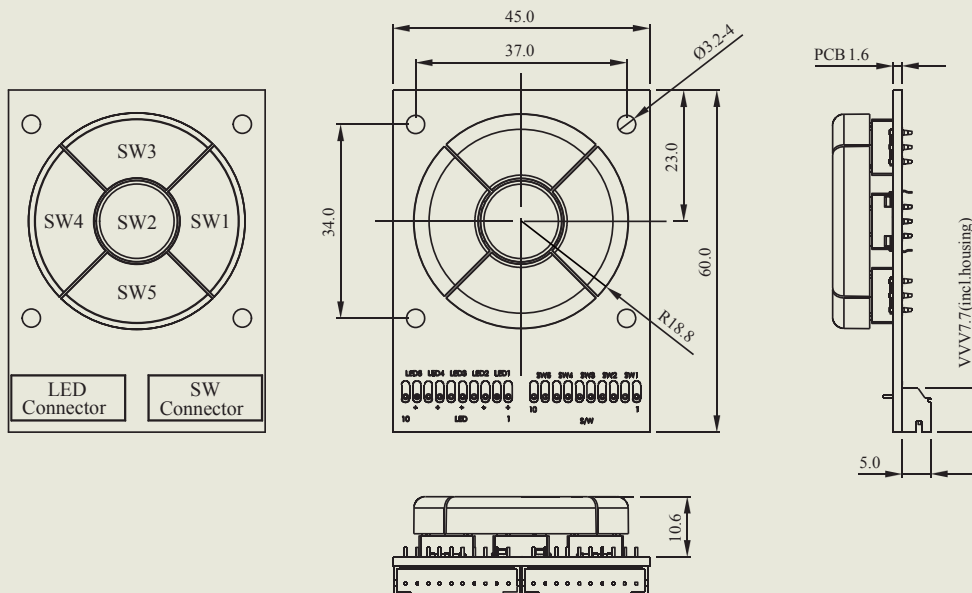
SPECIFICATION SHEET

EL5K series

PCB Layout & Panel cut-out details:



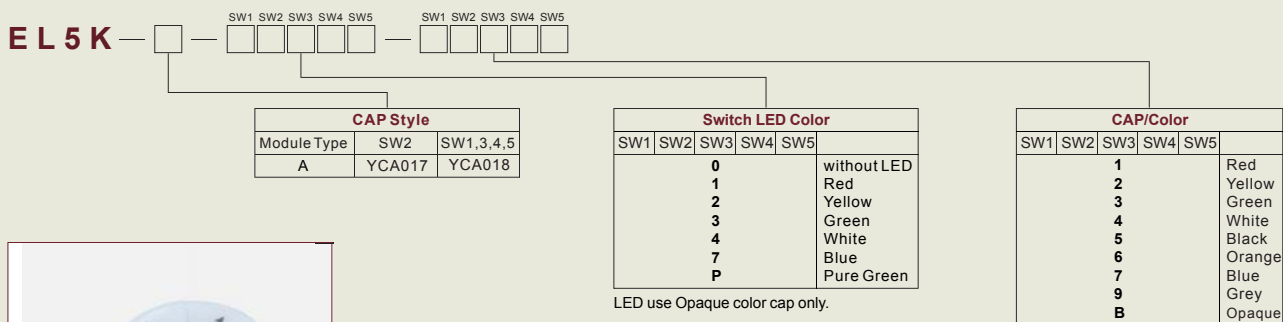
Dimensions:



SPECIFICATION SHEET

EL5K series

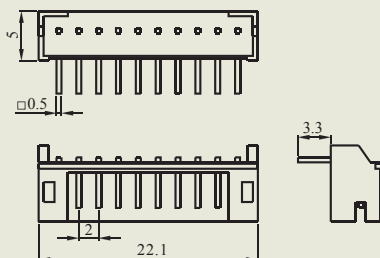
Ordering Information:



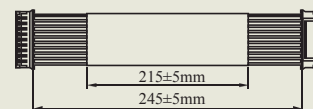
Accessories:



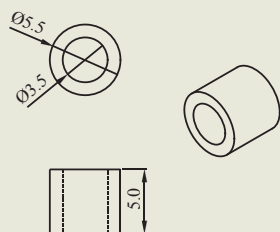
Connector: YCN001



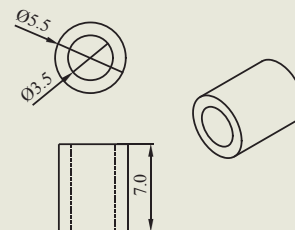
Cable: YCW001



Spacer Support : YPA008



Spacer Support : YPA009



SPECIFICATION SHEET

EL5K series

Standard Modules:

Module				
Part No	EL5K-AM003	EL5K-AM004	EL5K-AM005	EL5K-AM006
Description	Black Cap with white print Without LED	Cap Painted White with Laser Marking Pure Green LED	Cap Painted Green with Laser Marking Red LED	Cap Painted Black with Laser Marking Red LED

Module			
Part No	EL5K-AM007	EL5K-AM008	EL5K-AM009
Description	Cap Painted Silver with Laser Marking Blue LED	Cap Painted Blue with Laser Marking Yellow LED	Cap Painted Red with Laser Marking Blue LED

E&OE. Specifications are subject to change without notice.

SPECIFICATION SHEET